

# ozito

## ECOMOW ELECTRIC MOWER

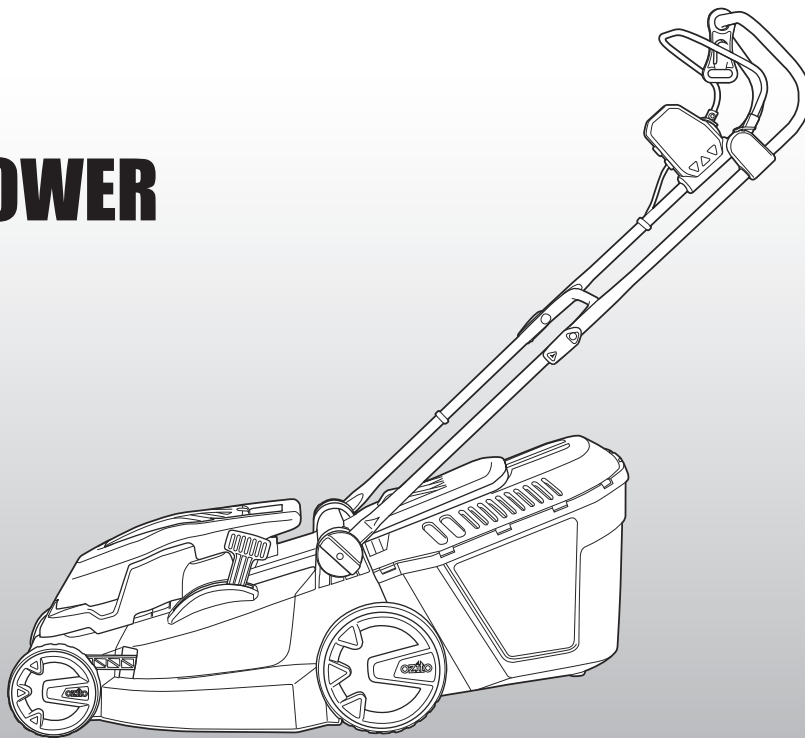
**1400W 380mm**

### INSTRUCTION MANUAL

#### SPECIFICATIONS

Power:	1400W
Input:	220-240V~50/60Hz
No Load Speed:	3,700/min
Cutting Diameter:	380mm
Cutting Heights:	20mm, 30mm, 40mm, 50mm, 60mm & 70mm
Catcher Capacity:	35 litre
Weight:	14.3kg

**ozito.com.au**



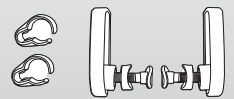
#### WHAT'S IN THE BOX



Electric Lawn Mower



3 Piece Grass Catcher



Handle Securing Set &  
Cable Clips

# 2

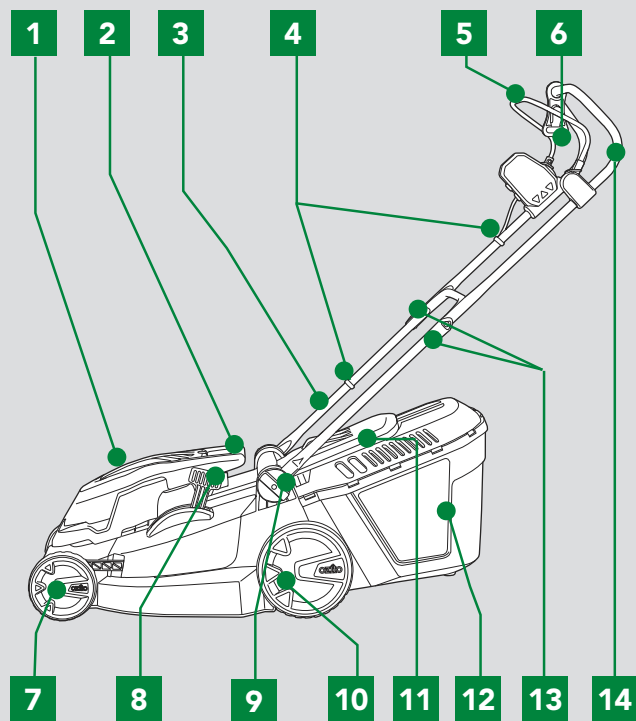
**YEAR REPLACEMENT WARRANTY**

**ELM-1400**

# KNOW YOUR PRODUCT

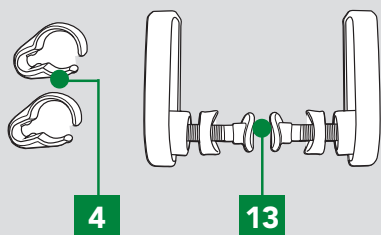
## ECOMOW ELECTRIC MOWER

- |                    |                           |
|--------------------|---------------------------|
| 1 Motor cover      | 8 Height adjustment lever |
| 2 Lifting handle   | 9 Quick adjustment knob   |
| 3 Lower handle     | 10 Rear wheel             |
| 4 Cord clips       | 11 Grass catcher flap     |
| 5 Start/stop lever | 12 Grass catcher          |
| 6 Cord retainer    | 13 Handle securing set    |
| 7 Front wheel      | 14 Upper handle           |



4 Cord clip

13 Handle securing set



### ONLINE MANUAL

Scan this QR Code with your mobile device to take you to the online manual.



# SETUP & PREPARATION

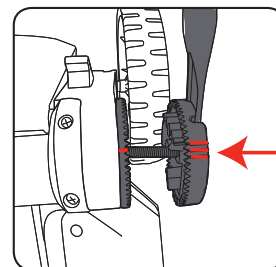
## 1. ASSEMBLY

### Fitting the Lower Handle to Mower Body

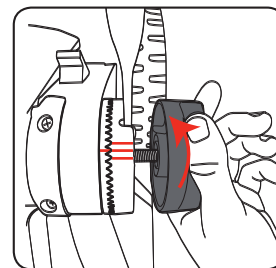


**WARNING!** ENSURE THE TOOL IS DISCONNECTED FROM THE POWER SUPPLY BEFORE ASSEMBLY.

1. Unscrew quick adjustment knob on both sides, fit the lower handle onto the threaded ends.

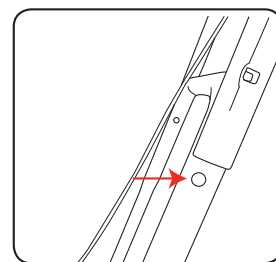


2. By using the lines as a guide for correct alignment, adjust the lower handle to the correct position for comfortable height, then fit and secure in place with the quick adjustment knobs.

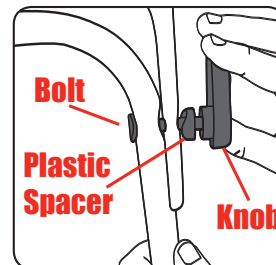


### Fitting the Upper Handle to the Lower Handle

1. Place the upper handle over the upper ends of the lower handle. From the handle securing set, fit the bolts through the inner side of the lower handle and then through the hole in the upper handle.



2. Place the plastic spacer onto the protruding thread, then secure in place by screwing the supplied handle securing knobs over the protruding ends of the bolts.



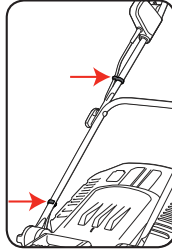
# 2

## YEAR REPLACEMENT WARRANTY

# OPERATION

## Securing the Power Cord to the Handles

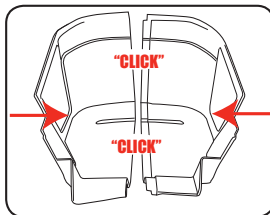
1. Secure the power cord from the switch housing to the mower using the two cord clips (supplied).



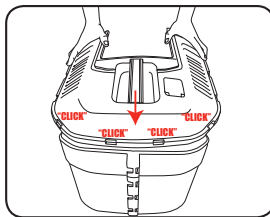
## Assembling the Grass Catcher

Assemble the three sections of the grass catcher.

1. Assemble the two bottom halves of the grass catcher together. Align the two halves and push each individual plastic lug into its opposite location. Ensure that all the plastic lugs engage correctly together around the entire middle section.



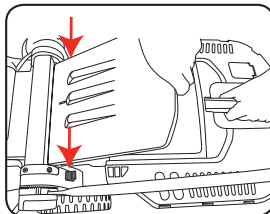
2. Assemble the grass catcher top onto the bottom half of the grass catcher assembled in step 1. Align the two halves and push each individual plastic lug into its opposite location. Ensure that all the plastic lugs engage correctly together around the entire middle section.



## Fitting and Removing Grass Catcher

The catcher must be attached to the two raised hooks on the mower.

1. Lift up the catcher flap with one hand and guide the catcher over the two hooks on the mower housing.
2. Lower the grass catcher in place and lower the catcher flap.



3. To empty the grass catcher, lift the catcher flap with one hand then lift the grass catcher with the other hand up off the two raised housing clips.

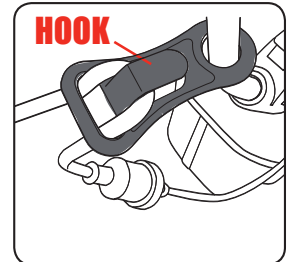
**WARNING!** WHEN ASSEMBLING THE GRASS CATCHER BACK TO THE MOWER AFTER EMPTYING, ALWAYS ENSURE THERE IS NO BUILD UP OF GRASS IN THE GRASS CHUTE. IF NEEDING TO CLEAR THE GRASS, ALWAYS ENSURE THE MOWER IS DISCONNECTED FROM THE POWER SUPPLY PRIOR TO CLEARING. A BUILD UP OF GRASS IN THE GRASS CHUTE MAY PREVENT GRASS FROM MOVING INTO THE GRASS CATCHER EFFECTIVELY.

## 2. PREPARATION

### Using the Cord Retainer

The cord retainer prevents the extension cord from being disconnected during use.

1. Make a loop with the extension cord (socket end of cord) through the loop and secure over the hook.
2. Connect the mower power plug into the extension cord socket as shown.

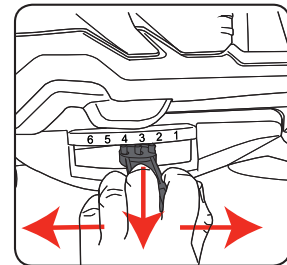


### Cutting Height Adjustment

The height adjustment lever provides 6 cutting heights from 20mm to 70mm.

**WARNING!** DISCONNECT THE MOWER FROM THE POWER SUPPLY AND ENSURE THE BLADE HAS STOPPED COASTING BEFORE ADJUSTING THE HEIGHT.

1. Using a firm grip, pull the height adjustment lever outward. Adjust until the required cutting height is selected.

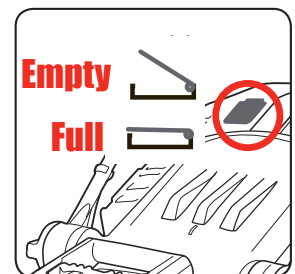


**CAUTION:** BE CAREFUL DURING CUTTING HEIGHT ADJUSTMENTS OF THE LAWN MOWER TO PREVENT ENTRAPMENT OF THE FINGERS BETWEEN MOVING HEIGHT ADJUSTMENT LEVER AND THE MOWER HOUSING.

### Grass Catcher Volume Indicator

To alert you that the grass catcher is full, the mower provides a volume indicator.

Indicator floats up when empty.  
Indicator is down when full.

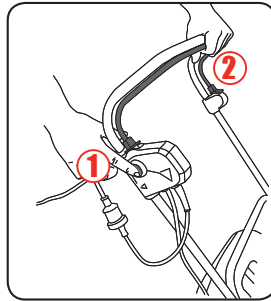


The tool is recommended for use with a residual current device with a rated residual current of 30mA or less.

### Switching On/Off

To prevent accidental start up of the motor the mower is fitted with a dual action switch

1. Press and hold the lock-off button.
2. Pull the Start/stop lever towards the handle and hold in position, the motor will now start.
3. Release the lock-off button
4. Release the Start/stop lever to stop the mower.



**WARNING!** THE BLADE WILL COAST AFTER THE SWITCH HAS BEEN RELEASED. BE AWARE OF THE NECESSARY TIME IT TAKES FOR THE BLADE TO STOP COASTING. DO NOT ATTEMPT TO STOP THE BLADE.

### Overload Protection

The mower has an internal cut off switch which will stop the operation of the motor temporarily if overloaded. This cut off switch will suddenly stop the motor from operating should the motor become too hot during the operation of the mower.

First disconnect the mower from the power supply and inspect blade for any obstructions.

A wait of up to 2 minutes in cooling time, or longer depending on ambient temperature and the operation being performed, before switching On the mower and resuming normal operation.

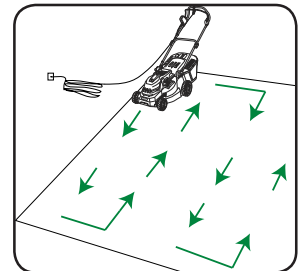
## 3. HOW TO MOW

- Always use an approved extension lead suitable for power input of this tool.
- Heavy duty power leads recommended.
- While using your lawn mower always wear substantial footwear and long trousers.
- Make sure the lawn is clear of sticks, stones, wire and debris; they could be thrown by the blade.
- Before using the lawn mower and after any impact, check for signs of wear or damage and repair as necessary.
- Replace a worn or damaged blade together with the blade bolt to preserve balance.

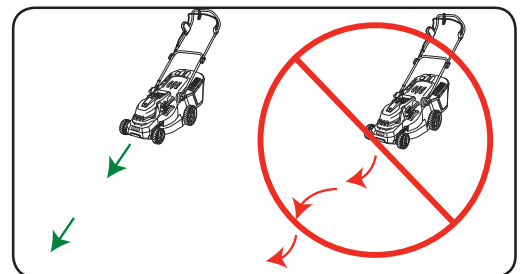
**WARNING!** KEEP EXTENSION CORD AWAY FROM BLADES.



Start mowing the edge of the lawn nearest to the power point so the lead is laid out on the lawn you have already cut.



For optimum grass collection, always mow in a straight line; do not swing the lawn mower from side to side.



### Do Not Overload the Mower

Mowing long thick grass may cause the motor speed to drop; you will hear a change in the motor sound. If the motor speed drops you may overload your lawn mower, which may cause damage. When mowing in long thick grass first cut with the cutting height set in the highest position, this will help reduce the load.

# MAINTENANCE

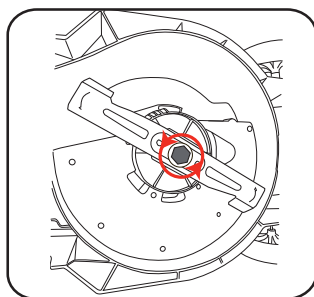
**WARNING!** BEFORE CLEANING YOUR ECOMOW ELECTRIC MOWER OR CARRYING OUT ANY MAINTENANCE PROCEDURE, MAKE SURE THAT THE MOTOR IS OFF AND THE TOOL DISCONNECTED FROM THE POWER SUPPLY TO PREVENT ACCIDENTAL STARTING.

## Removing the Blade

**CAUTION!** DO NOT TOUCH ROTATING BLADES.

**CAUTION!** ALWAYS HANDLE THE BLADE WITH CARE – SHARP EDGES COULD CAUSE SERIOUS INJURY. USE GLOVES.

1. To remove the blade bolt, hold the blade firmly and with a 13mm spanner (not supplied) loosen the blade bolt by turning it anti-clockwise.
2. Remove the blade bolt, washer and blade.
3. Inspect for damage and clean as necessary.



Replace the metal blade after 50 hours mowing or 2 years whichever is the sooner – regardless of condition. If the blade is cracked or damaged replace it with a new one. Never use a blade bolt if the insulated head is damaged, cracked or missing.

## Fitting the Blade

1. Fit the blade to the fan with the tilt edges of the blade facing towards the mower, ensuring the blade is located onto the fan location lugs correctly.
2. Re-assemble blade bolt with washer through blade and fan.
3. Hold the blade firmly and tighten blade bolt with a 13mm spanner (not supplied), by turning in a clockwise direction. Do not over tighten.

Ozito Industries will not be responsible for any damage or injuries caused by repair of the tool by an unauthorised person or mishandling or mistreatment of the tool. This tool is designed for Domestic Home Use only. Use in commercial or industrial environments will void the warranty.

- Keep all nuts, bolts and screws tight to be sure the lawn mower is in a safe working condition.
- Check the catcher frequently for wear or deterioration.
- Replace worn or damaged parts for safety.
- Only use the replacement blade, blade bolt, and impeller specified for this product.
- Be careful during adjustments of the lawn mower to prevent entrapment of the fingers between moving blade and fixed parts of the machine.
- Oil the wheel pins.
- When not in use, the mower should be stored in a dry, frost-free location, out of reach of children. If the housing of the mower requires cleaning, do not use solvents but a moist soft cloth and brush only.
- Frequently check the wheel threads are firm and tight.

# DESCRIPTION OF SYMBOLS

<b>V</b>	Volts	<b>Hz</b>	Hertz
<b>~</b>	Alternating current	<b>W</b>	Watts
<b>/min</b>	Revolutions or reciprocation per minute	<b>No</b>	No load speed
	Double insulated		Regulator compliance mark
	Read instruction manual		The sound power level indicates by Lwa in dB
	Danger - High Voltage		Keep extension cord away from cutting blades.
	Disconnect the mains plug if the cord is damaged or entangled		Warning
	Don't use on steep slopes.		Don't use with rear flap open.
	Beware of severing toes or hands. Do not put hands or feet near a rotating blade.		
	Keep bystanders away. Do not mow whilst people especially children or pets are in the mowing area.		
	Always keep the lawnmower on the ground when mowing. Tilting or lifting the lawnmower may cause stones to be thrown out.		
	Blades continue to rotate after machine is switched off		
	Switch Off! Remove plug from mains before adjusting, cleaning or if cable is entangled or damaged. Keep the cable away from the blade.		

# SPARE PARTS

Blade	SPELM1400-29
Blade Bolt	SPELM1400-31
Front Wheel	SPELM1400-36
Rear Wheel	SPELM1400-16
Belt	SPELM1400-4832

Spare parts can be ordered from the Special Orders Desk at your local Bunnings Warehouse.

For further information, or any parts not listed here, visit [www.ozito.com.au](http://www.ozito.com.au) or contact Ozito customer service Australia 1800 069 486 New Zealand 0508 069 486 E-mail: [enquires@ozito.com.au](mailto:enquires@ozito.com.au)

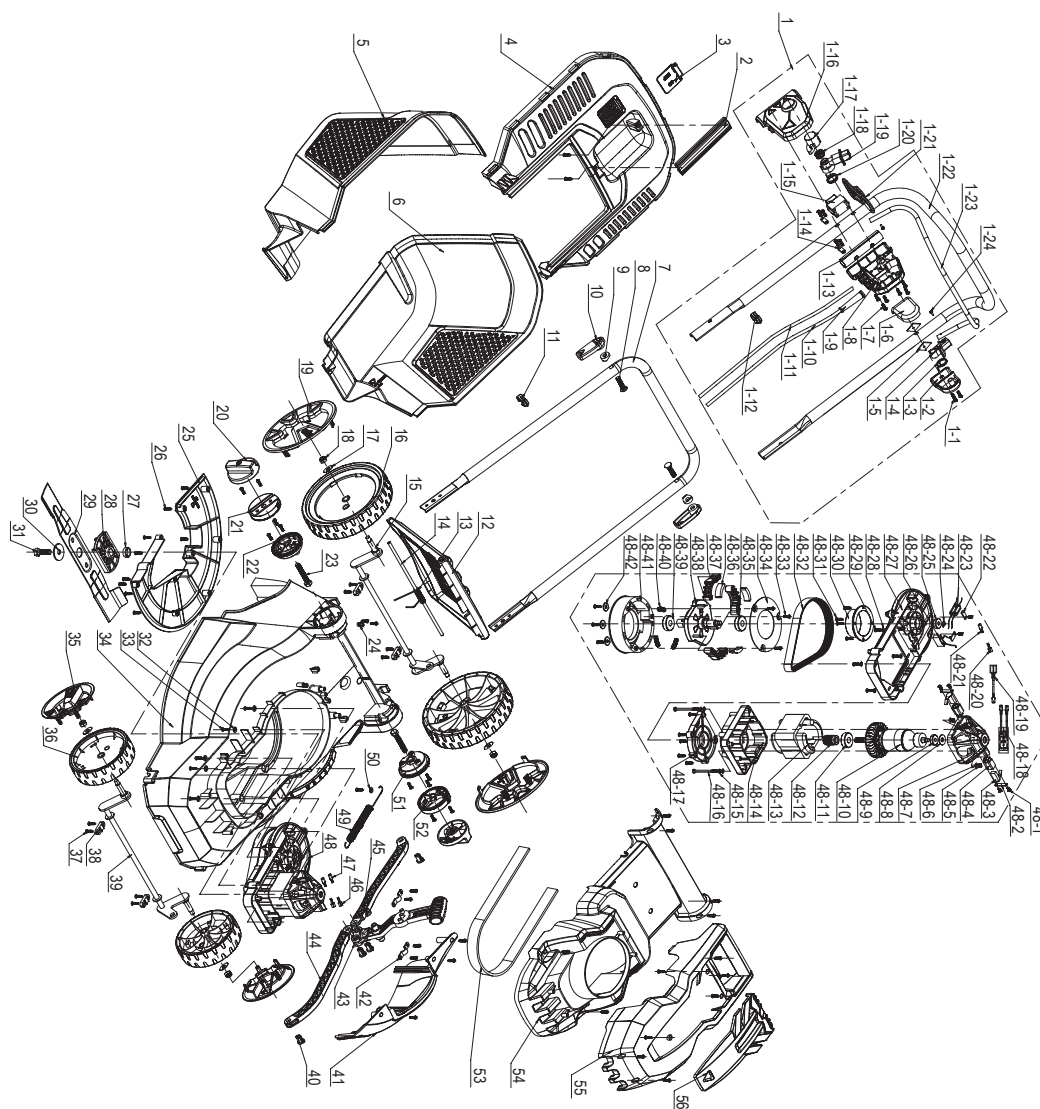
# CARING FOR THE ENVIRONMENT



Tools that are no longer usable should not be disposed of with household waste but in an environmentally friendly way. Please recycle where facilities exist. Check with your local council authority for recycling advice.



Recycling packaging reduces the need for landfill and raw materials. Reuse of recycled material decreases pollution in the environment. Please recycle packaging where facilities exist. Check with your local council authority for recycling advice.



The following is a list of spare parts carried by Ozito.  
Please contact Customer Service for any parts not listed.

Item No.	Description	Part No.
29	Blade	SPELM1400-29
31	Blade Bolt	SPELM1400-31
36	Front Wheel	SPELM1400-36
16	Rear Wheel	SPELM1400-16
4832	Belt	SPELM1400-4832

Item No.	Description	Part No.
----------	-------------	----------

## How To Order

Available spare parts can be ordered through the Special Orders Desk at any Bunnings Warehouse. If you have any further questions, please contact Ozito Customer Service on:

Australia: 1800 069 486

New Zealand: 0508 069 486

enquiries@ozito.com.au



# ELECTRICAL SAFETY



**WARNING!** When using mains-powered tools, basic safety precautions, including the following, should always be followed to reduce risk of fire, electric shock, personal injury and material damage.

Read the whole manual carefully and make sure you know how to switch the tool off in an emergency, before operating the tool.

Save these instructions and other documents supplied with this tool for future reference.

The electric motor has been designed for 230V and 240V only. Always check that the power supply corresponds to the voltage on the rating plate.

Note: The supply of 230V and 240V on Ozito tools are interchangeable for Australia and New Zealand.



This tool is double insulated in accordance with AS/NZS 60335-1; therefore no earth wire is required.

If the supply cord is damaged, it must be replaced by an electrician or a power tool repairer in order to avoid a hazard.

**Note:** Double insulation does not take the place of normal safety precautions when operating this tool. The insulation system is for added protection against injury resulting from a possible electrical insulation failure within the tool.

1. Before use, examine cord for damage; replace it if there are signs of damage or ageing.
2. Do not use the lawn mower if the electric cables are damaged or worn.

3. Immediately disconnect from the mains electricity supply if the cord is cut, or the insulation is damaged. Do not touch the electric cord until the electricity supply has been disconnected. Do not repair a cut or damaged cord; replace it with a new one.
4. Your extension lead must be unwound, coiled leads can overheat and reduce the efficiency of your mower.
5. Keep lead away from lawn mower; always work away from the power point mowing up and down never in circles.
6. Do not pull lead around sharp objects.
7. Always switch off at the mains before disconnecting any plug, cord or extension lead.
8. Never carry the product by the cord.
9. Never pull on the cord to disconnect any of the plugs.
10. Use only AC mains supply voltage shown on the product rating label.
11. It is recommended that the appliance should be supplied via a residual current device (RCD) with a tripping current of not more than 30 mA.
12. Use at least a 10 Amp rated 1.0 mm<sup>2</sup> extension cord with a maximum of 25 meters and the cord shall be not lighter than:
  - If rubber insulated, ordinary tough rubber sheathed flexible cord (code designation 60245 IEC 53);
  - If polyvinyl chloride insulated, ordinary polyvinyl chloride sheathed flexible cord (code designation 60227 IEC 53).

# GENERAL POWER TOOL SAFETY WARNINGS



**WARNING!** Read all safety warnings and all instructions. Failure to follow the warnings and instructions may result in electric shock, fire and/or serious injury.

**Save all warnings and instructions for future reference.**

The term "power tool" in the warnings refers to your mains-operated (corded) power tool or battery-operated (cordless) power tool.

## 1. Work area safety

- a. **Keep work area clean and well lit.** Cluttered or dark areas invite accidents.
- b. **Do not operate power tools in explosive atmospheres, such as in the presence of flammable liquids, gases or dust.** Power tools create sparks which may ignite the dust or fumes.
- c. **Keep children and bystanders away while operating a power tool.** Distractions can cause you to lose control.

## 2. Electrical safety

- a. **Power tool plugs must match the outlet. Never modify the plug in any way.** Do not use any adapter plugs with earthed (grounded) power tools. Unmodified plugs and matching outlets will reduce risk of electric shock.
- b. **Avoid body contact with earthed or grounded surfaces, such as pipes, radiators, ranges and refrigerators.** There is an increased risk of electric shock if your body is earthed or grounded.
- c. **Do not expose power tools to rain or wet conditions.** Water entering a power tool will increase the risk of electric shock.
- d. **Do not abuse the cord. Never use the cord for carrying, pulling or unplugging the power tool. Keep cord away from heat, oil, sharp edges or moving parts.** Damaged or entangled cords increase the risk of electric shock.
- e. **When operating a power tool outdoors, use an extension cord suitable for outdoor use.** Use of a cord suitable for outdoor use reduces the risk of electric shock.
- f. **If operating a power tool in a damp location is unavoidable, use a residual current device (RCD) protected supply.** Use of an RCD reduces the risk of electric shock.

## 3. Personal safety

- a. **Stay alert, watch what you are doing and use common sense when operating a power tool. Do not use a power tool while you are tired or under the influence of drugs, alcohol or medication.** A moment of inattention while operating power tools may result in serious personal injury.
- b. **Use personal protective equipment. Always wear eye protection.** Protective equipment such as dust mask, non-skid safety shoes, hard hat, or hearing protection used for appropriate conditions will reduce personal injuries.
- c. **Prevent unintentional starting. Ensure the switch is in the off-position before connecting to power source and/or battery pack, picking up or carrying the tool.** Carrying power tools with

your finger on the switch or energising power tools that have the switch on invites accidents.

- d. **Remove any adjusting key or wrench before turning the power tool on.** A wrench or a key left attached to a rotating part of the power tool may result in personal injury.
  - e. **Do not overreach. Keep proper footing and balance at all times.** This enables better control of the power tool in unexpected situations.
  - f. **Dress properly. Do not wear loose clothing or jewellery. Keep your hair, clothing and gloves away from moving parts.** Loose clothes, jewellery or long hair can be caught in moving parts.
  - g. **If devices are provided for the connection of dust extraction and collection facilities, ensure these are connected and properly used.** Use of dust collection can reduce dust-related hazards.
- ## 4. Power tool use and care
- a. **Do not force the power tool. Use the correct power tool for your application.** The correct power tool will do the job better and safer at the rate for which it was designed.
  - b. **Do not use the power tool if the switch does not turn it on and off.** Any power tool that cannot be controlled with the switch is dangerous and must be repaired.
  - c. **Disconnect the plug from the power source and/or the battery pack from the power tool before making any adjustments, changing accessories, or storing power tools.** Such preventive safety measures reduce the risk of starting the power tool accidentally.
  - d. **Store idle power tools out of the reach of children and do not allow persons unfamiliar with the power tool or these instructions to operate the power tool.** Power tools are dangerous in the hands of untrained users.
  - e. **Maintain power tools. Check for misalignment or binding of moving parts, breakage of parts and any other condition that may affect the power tool's operation. If damaged, have the power tool repaired before use.** Many accidents are caused by poorly maintained power tools.
  - f. **Keep cutting tools sharp and clean.** Properly maintained cutting tools with sharp cutting edges are less likely to bind and are easier to control.
  - g. **Use the power tool, accessories and tool bits etc. in accordance with these instructions, taking into account the working conditions and the work to be performed.** Use of the power tool for operations different from those intended could result in a hazardous situation.
- ## 5. Service
- a. **Have your power tool serviced by a qualified repair person using only identical replacement parts.** This will ensure that the safety of the power tool is maintained.
  - b. **If the supply cord is damaged, it must be replaced by the manufacturer, its service agent or similarly qualified persons in order to avoid a hazard.**

# ADDITIONAL SAFETY INSTRUCTIONS FOR LAWN MOWERS



**WARNING!** If not used properly this lawn mower can be dangerous!

This lawn mower can cause serious injury to the operator and others, the warnings and safety instructions must be followed to ensure reasonable safety and efficiency in using this lawn mower. The operator is responsible for following the warning and safety instructions in this manual and on the lawn mower. Never use the mower unless the catcher or guards provided by the manufacturer are in the correct position.

## 1) Training

- Read the instructions carefully. Be familiar with the controls and the proper use of the appliance.
- Never allow children or people unfamiliar with these instructions to use the appliance. Local regulations may restrict the age of the operator.
- Never mow while people, especially children, or pets are nearby.
- The operator or user is responsible for accidents or hazards occurring to other people or their property.

## 2) Preparation

- While mowing, always wear substantial footwear and long trousers.
- Do not operate the appliance when barefoot or wearing open sandals.
- Thoroughly inspect the area where the appliance is to be used and remove all stones, sticks, wires, bones, and other foreign objects.
- Before using, always visually inspect to see that the blades, blade bolts and cutter assembly are not worn or damaged. Replace worn or damaged blades and bolts in sets to preserve balance.
- On multi-bladed appliances, take care as rotating one blade can cause other blades to rotate.

## 3) Operation

- Mow only in daylight or in good artificial light.
- Avoid operating the appliance in wet grass, where feasible.
- Always be sure of your footing on slopes.
- Walk, never run.
- For wheeled rotary mowers, mow across the face of slopes, never up and down.

- Exercise extreme caution when changing direction on slopes.
- Do not mow excessively steep slopes.
- Use extreme caution when reversing or pulling the appliance towards you.
- Stop the blade(s) if the appliance has to be tilted for transportation when crossing surfaces other than grass, and when transporting the appliance to and from the area to be mowed.
- Never operate the appliance with defective guards or shields, or without safety devices, for example deflectors and/or grass catchers, in place.
- Switch on the motor according to instructions and with feet well away from the blade(s).
- Do not tilt the appliance when switching on the motor, except if the appliance has to be tilted for starting. In this case, do not tilt it more than absolutely necessary and lift only the part which is away from the operator. Always ensure that both hands are in the operating position before returning the appliance to the ground.
- Do not put hands or feet near or under rotating parts. For rotary mowers, keep clear of the discharge opening at all times.
- Never pick up or carry an appliance while the motor is running.
- Pull the plug from the socket:
  - whenever you leave the machine;
  - before clearing a blockage;
  - before checking, cleaning or working on the appliance;
  - after striking a foreign object. Inspect the appliance for damage and make repairs as necessary;
  - if the appliance starts to vibrate abnormally (check immediately).

## 4) Maintenance and storage

- Keep all nuts, bolts, and screws tight to be sure the appliance is in safe working condition.
- Check the grass catcher frequently for wear or deterioration.
- Replace worn or damaged parts for safety.
- For cylinder mowers, be careful during adjustment of the appliance to prevent entrapment of the fingers between moving blades and fixed parts of the appliance.

## WARRANTY

IN ORDER TO MAKE A CLAIM UNDER THIS WARRANTY YOU MUST RETURN THE PRODUCT TO YOUR NEAREST BUNNINGS WAREHOUSE WITH YOUR BUNNINGS REGISTER RECEIPT. PRIOR TO RETURNING YOUR PRODUCT FOR WARRANTY PLEASE TELEPHONE OUR CUSTOMER SERVICE HELPLINE:

**Australia 1800 069 486**

**New Zealand 0508 069 486**

TO ENSURE A SPEEDY RESPONSE PLEASE HAVE THE MODEL NUMBER AND DATE OF PURCHASE AVAILABLE. A CUSTOMER SERVICE REPRESENTATIVE WILL TAKE YOUR CALL AND ANSWER ANY QUESTIONS YOU MAY HAVE RELATING TO THE WARRANTY POLICY OR PROCEDURE.

The benefits provided under this warranty are in addition to other rights and remedies which are available to you at law.

Our goods come with guarantees that cannot be excluded at law. You are entitled to a replacement or refund for a major failure and for compensation for any other reasonably foreseeable loss or damage. You are also entitled to have the goods repaired or replaced if the goods fail to be of acceptable quality and the failure does not amount to a major failure.

Generally you will be responsible for all costs associated with a claim under this warranty, however, where you have suffered any additional direct loss as a result of a defective product you may be able to claim such expenses by contacting our customer service helpline above.

### 2 YEAR REPLACEMENT WARRANTY

Your product is guaranteed for a period of **24 months from the original date of purchase** and is intended for DIY (Do It Yourself) use only. If a product is defective it will be replaced in accordance with the terms of this warranty. Warranty excludes consumable parts, for example: grass catcher, wheels, blade, cord clips, bearings & carbon brushes

### WARNING

**The following actions will result in the warranty being void.**

- If the tool has been operated on a supply voltage other than that specified on the tool.
- If the tool shows signs of damage or defects caused by or resulting from abuse, accidents or alterations.
- Failure to perform maintenance as set out within the instruction manual.
- If the tool is disassembled or tampered with in any way.
- Professional, industrial or high frequency use.